



Diablo High Flow Pump **USER MANUAL**

Model Numbers:
CET- 26000
CET-30000
CET-35000
CET-35000T

Table of Contents

Page 1: Product Overview

The Diablo Aqua Solutions High Flow Pump

Page 2: Key Features of Diablo High Flow Pump

No Water Stalling Protection Feature

Page 3: Parts and Dimensions of Diablo High Flow Pump

Page 4: Specifications of Diablo High Flow Pump

Product Model CET-26000

Product Model CET-30000

Page 5: Specifications of Diablo High Flow Pump

Product Model CET-35000

Product Model CET-35000T

Page 6: Specifications of Diablo High Flow Pump

CET-35000T (with controller) 10 gear adjustment

Unit Overview

Disassembled View of the Unit

Page 7: Installation Instructions

Page 8: Disassembling the High Flow Pump

Page 9: Cleaning & Maintenance of the Diablo High Flow Pump

Page 10: Warranty & Customer Support

Warranty Information

Diablo Aqua Solutions Contact Information

Diablo High Flow Pump

Model Numbers:
CET- 26000 | CET-30000 | CET-35000 | CET-35000T

The **Diablo Aqua Solutions High Flow Pump** has multiple models offering a range of power options from 330W to 450W, and a maximum flow capacity of up to 32,000L/h, this pump is designed to meet the needs of both residential and commercial applications.

It supports dual voltage ratings of 220-240V/50Hz or 110-120V/60Hz, providing flexibility for different environments.



Diablo High Flow Pump provides optimal water flow for all your aquatic needs.

Diablo Aqua Solutions High Flow Pump

A product that is a versatile and efficient solution for demanding water circulation needs. Whether this is used in large aquariums, water features, or industrial applications, Diablo Aqua Solutions High Flow Pump ensures reliable, high-performance operation, delivering optimal flow rates for efficient water movement and circulation.

Key Features **Diablo High Flow Pump**

Model Numbers:

CET- 26000 | CET-30000 | CET-35000 | CET-35000T

Key Benefits of Diablo Aqua Solutions High Flow Pump:

- 1. High Flow Capacity:** With a maximum flow rate of up to 32,000L/h, this pump efficiently handles large water circulation needs, making it ideal for large aquariums, water features, and industrial applications.
- 2. Versatile Power Options:** The pump supports dual voltage settings (220-240V/50Hz or 110-120V/60Hz), offering flexibility for use in various environments and regions, ensuring broad compatibility.
- 3. Reliable Performance:** Built for durability and efficiency, the Diablo Aqua Solutions High Flow Pump provides consistent, high-performance water movement, helping to maintain proper circulation and filtration in demanding setups.

No water stalling protection

Re-energise to work normally.
When the water pump runs for 60 seconds without water.

After that, the water pump will automatically power off protection and restart again after 10 seconds.

If the status is not eliminated, it will still enter the power-off protection state until the power is permanently cut off after five repeated restarts.

Protection prompt Er03: When the water pump is blocked, the water pump will automatically be powered off for protection, and the protection prompt Er02.

(Only the model with the controller has a hint)



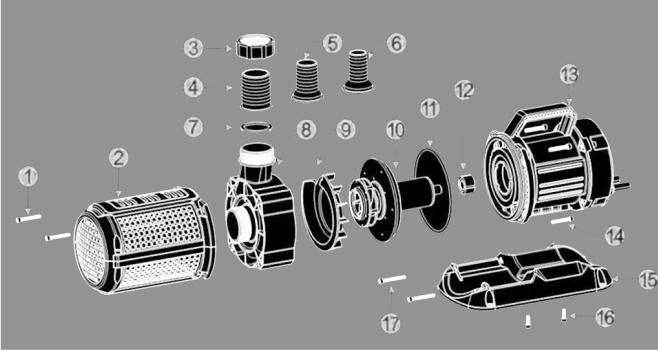
Note: *When troubleshooting, you need to unplug the power supply.*

Parts & Dimensions Diablo High Flow Pump

Model Numbers:

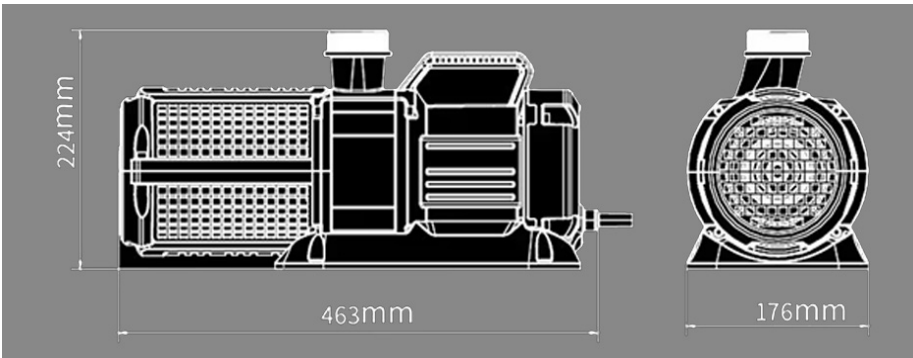
CET- 26000 | CET-30000 | CET-35000 | CET-35000T

Water Pump Parts



1	Screw M6x40
2	Water Filter Cover
3	Water Outlet Nut
4	Outlet 1
5	Outlet 2
6	Outlet 3
7	Gasket
8	Impeller Chamber
9	Impeller Auxiliary
10	Rotor Assembly
11	O-Ring
12	Bearing
13	Pump Body
14	Screw M6x35
15	Chassis
16	Screw M6x45
17	Screw M6x16

Water Pump Dimensions



Specifications Diablo High Flow Pump

Model Numbers:

CET-26000 | CET-30000 | CET-35000 | CET-35000T

Product Model	CET-26000
Rated Power Supply	220-240V/50Hz 110-120V/60Hz
Rated Power	330W
Maximum Flow	26000L/h
Maximum Lift	9.5m
Water Outlet	32/28/50mm
Whether with controller	x

Product Model	CET-30000
Rated Power Supply	220-240V/50Hz 110-120V/60Hz
Rated Power	400W
Maximum Flow	28000L/h
Maximum Lift	11m
Water Outlet	32/28/50mm
Whether with controller	x

Specifications **Diablo High Flow Pump**

Model Numbers:

CET-26000 | CET-30000 | CET-35000 | CET-35000T

Product Model	CET-35000
Rated Power Supply	220-240V/50Hz 110-120V/60Hz
Rated Power	450W
Maximum Flow	32000L/h
Maximum Lift	12m
Water Outlet	32/28/50mm
Whether with controller	x

Product Model	CET-35000T
Rated Power Supply	220-240V/50Hz 110-120V/60Hz
Rated Power	45W-450W
Maximum Flow	32000L/h
Maximum Lift	12m
Water Outlet	32/28/50mm
Whether with controller	✓

Specifications Diablo High Flow Pump

Model Numbers:

CET- 26000 | CET-30000 | CET-35000 | CET-35000T

CET-35000T (with controller) 10 gear adjustment as follows:

Model	Rated Power Supply	Gear	Power	Flow	Lift
CET-350000T	110-120V/50Hz 220V-240V/50Hz	1	45W	13000L/h	2m
		2	70W	15000L/h	3m
		3	100W	17000L/h	4.0m
		4	135W	19000L/h	4.8m
		5	180W	20500L/h	6m
		6	225W	22000L/h	7m
		7	275W	24000L/h	8m
		8	330W	26000L/h	9.5m
		9	400W	28000L/h	11m
		10	450W	32000L/h	12m

Power Cord Length: 10m

Unit Overview



Disassembled View of the Water Pump Outlet Caliber



Installation Instructions Diablo High Flow Pump

Model Numbers:

CET-26000 | CET-30000 | CET-35000 | CET-35000T

Installation Instructions for Diablo Aqua Solutions High Flow Pump:

1. Choose a Suitable Location:

- Select a stable, level surface for the pump to ensure proper operation.
- Ensure the pump is placed in a well-ventilated area and away from direct heat sources.

2. Check the Voltage:

- Verify that the pump's voltage rating matches your power supply (220-240V/50Hz or 110-120V/60Hz) before connecting it to the electrical outlet.

3. Connect the Hoses:

- Attach the inlet and outlet hoses to the appropriate ports on the pump. Ensure the connections are secure to prevent leaks.
- Use hose clamps if necessary for a tighter seal.

4. Install the Pump Impeller:

- Carefully insert the impeller back into the pump housing, making sure it is properly aligned and seated.

5. Place the Pump in the Water (if applicable):

- For aquarium or water feature use, submerge the pump in water, ensuring the inlet is fully submerged to avoid air intake, which can damage the pump.

6. Connect the Power Supply:

- Plug the pump's power cable into the electrical outlet.
- Ensure the power cable is not kinked or damaged to avoid electrical hazards.

7. Test the Pump:

- Turn on the pump and check for proper flow and operation. Look for any signs of leaks or unusual noises.
- Adjust the flow rate, if necessary, depending on your specific needs.

8. Final Checks:

- Confirm that all connections are secure, the pump is operating smoothly, and the environment is safe for long-term use.

Disassembly Instructions

Diablo High Flow Pump

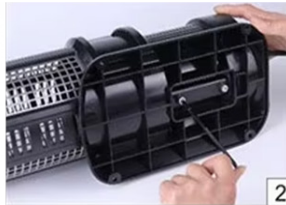
Model Numbers:

CET- 26000 | CET-30000 | CET-35000 | CET-35000T

Disassembly of the Water Pump



Step 4: Unscrew the filter hood with a hexagon screwdriver (4 screws on).



Step 4: Then unscrew the 2 screws.



Step 4: Remove the filter hood and rear chassis.



Step 4: Unscrew the impeller with a hexagon screwdriver (Room of 4 screws).



Step 5: After removing the impeller chamber.



Step 6: Remove the rotor and clean it / replace it. (if applicable)

Reminder: If the water pump is not used for a long time, please lift the water pump away from the water surface. It is best to run it in clean water for a while, then rise the inside of the movement with clean water, wipe it clean and collect it after drying. If the air temperature is lower than 0°C, the water pump is out of the water.

After that, the accumulated water in the machine should be discharged immediately to prevent freezing and damaging the water pump.

Cleaning and Maintenance Diablo High Flow Pump

Model Numbers:

CET- 26000 | CET-30000 | CET-35000 | CET-35000T

Quick Cleaning Instructions for Diablo Aqua Solutions High Flow Pump:

1. Turn off the pump and disconnect it from the power source for safety.
2. Disassemble the pump: Remove any connected hoses or accessories, and carefully detach the pump components.
3. Clean the intake and outlet: Use a soft brush or cloth to remove debris or algae buildup from the intake and outlet areas.
4. Clean the pump impeller: Gently remove the impeller and rinse it with clean water. Use a brush to remove any dirt or obstructions.
5. Clean the housing: Wipe down the pump housing with a damp cloth. Avoid using harsh chemicals.
6. Check for any blockages: Inspect all components, ensuring no debris is clogging the pump parts.
7. Reassemble the pump: Once all parts are clean and dry, carefully reassemble the pump.
8. Reconnect the pump and check for proper operation before using it again. Regular cleaning ensures optimal performance and longevity of your pump.

Warranty & Customer Support

Model Numbers:

DPF-5000 | DPF-10000 | DPF-15000 | DPF-20000 | DPF-30000 | DPF-50000

For customer support or warranty enquiries, please contact
Diablo Aqua Solutions at **Support@diabloaquasolutions.com.au**.

Guaranteed 2-Year Warranty:

Duration: Typically lasts 2 years from the date of purchase.

Coverage: The limited warranty typically covers only manufacturing defects or issues arising from normal use. It may not cover damage caused by improper handling, misuse, or neglect.

Benefits: Offers basic coverage for the first few years of use.

This warranty is typically sufficient for users who expect minimal maintenance or issues with the product.

2-Year Warranty for Diablo Aqua Solutions Products: This warranty covers defects in materials or workmanship under normal use for a period of two (2) years from the date of purchase.

Conditions and Exclusions: Proof of Purchase: A valid proof of purchase (e.g., receipt or invoice) must be provided to claim the warranty.

Warranty Process: To initiate a warranty claim, contact business of purchase with the product details and proof of purchase. The company may require the return of the product for inspection before offering a repair, replacement, or refund.

This warranty ensures that Diablo Aqua Solutions products meet high standards of quality, offering peace of mind for the full two-year period.

Diablo Aqua Solutions

1800 342 256

www.diabloaquasolutions.com.au

Support@diabloaquasolutions.com.au

Melbourne, Victoria